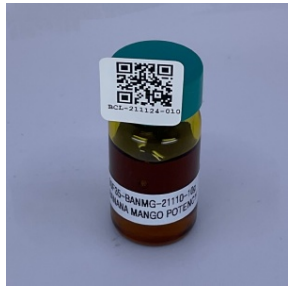


CERTIFICATE OF ANALYSIS

* FOR QUALITY ASSURANCE PURPOSES. NOT A CALIFORNIA COMPLIANCE CERTIFICATE.

PRODUCED: NOV 27, 2021

SAMPLE: 30F35 BANMG 211110 HTE (CONCENTRATE) // CLIENT: ABSTRAX LABS LONG BEACH // BATCH: PASS



MATRIX: CONCENTRATE
 CATEGORY: INHALABLE
 SAMPLE ID: BCL-211124-010
 COLLECTED ON: NOV 24, 2021
 RECEIVED ON: NOV 24, 2021
 BATCH/SAMPLE SIZE: 10 G / 10 G

CANNABINOID OVERVIEW

TOTAL THC:	68.37284 %
TOTAL CBD:	0.17597 %
TOTAL CANNABINOIDS:	80.8036 %



BCL-03: CANNABINOID POTENCY BY HPLC-UV // NOV 25, 2021

ANALYTE	AMT	AMT	LOD/LOQ (mg/g)	PASS/FAIL
CBC	0.51220 %	5.1220 mg/g	0.022/0.5	N/A
CBCA	1.06530 %	10.6530 mg/g	0.063/0.5	N/A
CBD	0.05950 %	0.5950 mg/g	0.031/0.5	N/A
CBDA	0.13280 %	1.3280 mg/g	0.016/0.5	N/A
CBDV	ND	ND	0.024/0.5	N/A
CBDVA	ND	ND	0.016/0.5	N/A
CBG	1.67510 %	16.7510 mg/g	0.029/0.5	N/A
CBGA	4.93800 %	49.3800 mg/g	0.02/0.5	N/A
CBN	0.06960 %	0.6960 mg/g	0.016/0.5	N/A
Δ ⁸ -THC	ND	ND	0.058/0.5	N/A
Δ ⁹ -THC	41.11480 %	411.1480 mg/g	0.042/0.5	N/A
THCA	31.08100 %	310.8100 mg/g	0.03/0.5	N/A
THCV	0.15530 %	1.5530 mg/g	0.033/0.5	N/A
THCVA	ND	ND	0.023/0.5	N/A
TOT THC **	68.37284 %	683.7284 mg/g		N/A
TOT CBD **	0.17597 %	1.7597 mg/g		N/A

** TOTAL CBD = (CBDA X 0.877) + CBD

** TOTAL THC = (THCA X 0.877) + THC

BCL-09: TERPENOID TESTING BY HS-GC/FID // NOV 27, 2021

ANALYTE	AMT	AMT	LOD/LOQ (µg/g)	PASS/FAIL
TOTAL TERPENES	8.67359 %	86.7359 mg/g		N/A
TERPINOLENE	4.01562 %	40.1562 mg/g	0.27254/128.86598	N/A
β-MYRCENE	1.35664 %	13.5664 mg/g	0.35028/128.86598	N/A
β-CARYOPHYLLENE	1.15158 %	11.5158 mg/g	1.76786/128.86598	N/A
D-LIMONENE	1.00421 %	10.0421 mg/g	0.23077/128.86598	N/A
α-HUMULENE	0.31486 %	3.1486 mg/g	0.43213/128.86598	N/A
α-PINENE	0.15644 %	1.5644 mg/g	0.19896/128.86598	N/A
α-TERPINENE	0.12166 %	1.2166 mg/g	0.27718/128.86598	N/A
γ-TERPINENE	0.10982 %	1.0982 mg/g	0.43496/128.86598	N/A
β-PINENE	0.19350 %	1.9350 mg/g	2.08622/128.86598	N/A
Δ ³ -CARENE	0.09006 %	0.9006 mg/g	0.42472/128.86598	N/A
α-BISABOLOL	0.05897 %	0.5897 mg/g	4.01832/128.86598	N/A
LINALOOL	0.03557 %	0.3557 mg/g	0.34156/128.86598	N/A
EUCALYPTOL	0.02037 %	0.2037 mg/g	0.43147/128.86598	N/A
CAMPHENE	0.01896 %	0.1896 mg/g	0.20013/128.86598	N/A
GERANIOL	0.01878 %	0.1878 mg/g	0.26852/128.86598	N/A
α-OCIMENE	0.00655 %	0.0655 mg/g	1.24416/39.94845	N/A
β-OCIMENE	ND	ND	0.46134/88.91753	N/A
GUAIOL	ND	ND	2.5175/128.86598	N/A
ISOPULEGOL	ND	ND	0.50263/128.86598	N/A
P-CYMENTHENE	ND	ND	0.25113/128.86598	N/A

RESULTS CERTIFIED BY: CODY SHEPPARD, PH.D.
 LABORATORY DIRECTOR, BELCOSTA LABS
 NOV 27, 2021



BCL-13: PESTICIDE TESTING BY GC/MS // NOV 26, 2021

ANALYTE	LIMIT	AMT (µg/g)	LOD/LOQ (µg/g)	PASS/FAIL
CAPTAN	0.7 µg/g	ND	0.01977/0.06	PASS
CHLORDANE	Any amt	ND		PASS
CHLORDANE CIS		ND	0.01199/0.03	N/A
CHLORDANE TRANS		ND	0.01082/0.03	N/A
CHLORFENAPYR	Any amt	ND	0.01364/0.06	PASS

ANALYTE	LIMIT	AMT (µg/g)	LOD/LOQ (µg/g)	PASS/FAIL
CHLORPYRIFOS	Any amt	ND	0.01653/0.06	PASS
DICHLORVOS	Any amt	ND	0.01165/0.06	PASS
METHYL PARATHION	Any amt	ND	0.00851/0.06	PASS
PENTACHLORONI-TROBENZENE	0.1 µg/g	ND	0.01282/0.06	PASS

BCL-05: RESIDUAL PESTICIDE ANALYSIS BY LC-MS/MS ESI // NOV 26, 2021

ANALYTE	LIMIT	AMT (µg/g)	LOD/LOQ (µg/g)	PASS/FAIL
ABAMECTIN	0.1 µg/g	ND	0.01153/0.04	PASS
ACEPHATE	0.1 µg/g	ND	0.00368/0.02	PASS
ACEQUINOCYL	0.1 µg/g	ND	0.00417/0.02	PASS
ACETAMIPRID	0.1 µg/g	ND	0.00464/0.02	PASS
ALDICARB	Any amt	ND	0.01109/0.04	PASS
AZOXYSTROBIN	0.1 µg/g	ND	0.00639/0.02	PASS
BIFENAZATE	0.1 µg/g	ND	0.00355/0.02	PASS
BIFENTHRIN	3 µg/g	ND	0.00473/0.04	PASS
BOSCALID	0.1 µg/g	ND	0.00494/0.02	PASS
CARBARYL	0.5 µg/g	ND	0.00295/0.02	PASS
CARBOFURAN	Any amt	ND	0.00613/0.02	PASS
CHLORANTRANIL-IPROLE	10 µg/g	ND	0.00697/0.04	PASS
CLOFENTEZINE	0.1 µg/g	ND	0.0054/0.02	PASS
COUMAPHOS	Any amt	ND	0.00215/0.02	PASS
CYFLUTHRIN	2 µg/g	ND	0.05508/0.2	PASS
CYPERMETHRIN	1 µg/g	ND	0.00556/0.04	PASS
DAMINOZIDE	Any amt	ND	0.00227/0.04	PASS
DIAZINON	0.1 µg/g	ND	0.00487/0.02	PASS
DIMETHOATE	Any amt	ND	0.00354/0.02	PASS
DIMETHOMORPH	2 µg/g	ND		PASS
DIMETHOMORPH I		ND	0.00109/0.0078	N/A
DIMETHOMORPH II		ND	0.0015/0.0122	N/A
ETHOPROPHOS	Any amt	ND	0.0041/0.02	PASS
ETOFENPROX	Any amt	ND	0.00274/0.02	PASS
ETOXAZOLE	0.1 µg/g	ND	0.00385/0.02	PASS
FENHEXAMID	0.1 µg/g	ND	0.01055/0.02	PASS
FENOXYCARB	Any amt	ND	0.00175/0.02	PASS
FENPYROXIMATE	0.1 µg/g	ND	0.00481/0.02	PASS
FIPRONIL	Any amt	ND	0.00478/0.02	PASS
FLONICAMID	0.1 µg/g	ND	0.00398/0.02	PASS
FLUDIOXONIL	0.1 µg/g	ND	0.01369/0.04	PASS
HEXYTHIAZOX	0.1 µg/g	ND	0.00297/0.02	PASS
IMAZALIL	Any amt	ND	0.0056/0.02	PASS
IMIDACLOPRID	5 µg/g	ND	0.00645/0.02	PASS
KRESOXIM-METHYL	0.1 µg/g	ND	0.00339/0.02	PASS

ANALYTE	LIMIT	AMT (µg/g)	LOD/LOQ (µg/g)	PASS/FAIL
MALATHION	0.5 µg/g	0.0839	0.00472/0.02	PASS
METALAXYL	2 µg/g	ND	0.00503/0.02	PASS
METHIOCARB	Any amt	ND	0.00503/0.02	PASS
METHOMYL	1 µg/g	ND	0.00494/0.02	PASS
MEVINPHOS	Any amt	ND		PASS
MEVINPHOS I		ND	0.00163/0.0084	N/A
MEVINPHOS II		ND	0.00542/0.0316	N/A
MYCLOBUTANIL	0.1 µg/g	ND	0.00867/0.04	PASS
NALED	0.1 µg/g	ND	0.00328/0.02	PASS
OXAMYL	0.5 µg/g	ND	0.00455/0.02	PASS
PACLOBUTRAZOL	Any amt	ND	0.00714/0.04	PASS
PERMETHRIN	0.5 µg/g	ND		PASS
PERMETHRIN CIS		ND	0.00237/0.0082	N/A
PERMETHRIN TRANS		ND	0.00245/0.0118	N/A
PHOSMET	0.1 µg/g	ND	0.0043/0.02	PASS
PIPERONYLBUTO-XIDE	3 µg/g	ND	0.00247/0.02	PASS
PRALLETHRIN	0.1 µg/g	ND	0.00392/0.02	PASS
PROPICONAZOLE	0.1 µg/g	ND	0.0024/0.02	PASS
PROPOXUR	Any amt	ND	0.00374/0.02	PASS
PYRETHRINS	0.5 µg/g	ND	0.00726/0.04	PASS
PYRIDABEN	0.1 µg/g	ND	0.0034/0.02	PASS
SPINETORAM	0.1 µg/g	ND		PASS
SPINETORAM J		ND	0.00329/0.016	N/A
SPINETORAM L		ND	0.00157/0.016	N/A
SPINOSAD	0.1 µg/g	ND		PASS
SPINOSAD A		ND	0.00205/0.01438	N/A
SPINOSAD D		ND	0.00104/0.00498	N/A
SPIROMESIFEN	0.1 µg/g	ND	0.00944/0.04	PASS
SPIROTETRAMAT	0.1 µg/g	ND	0.00208/0.02	PASS
SPIROXAMINE	Any amt	ND	0.00344/0.02	PASS
TEBUCONAZOLE	0.1 µg/g	ND	0.00816/0.04	PASS
THIACLOPRID	Any amt	ND	0.0039/0.02	PASS
THIAMETHOXAM	5 µg/g	ND	0.00358/0.02	PASS
TRIFLOXYSTROB-IN	0.1 µg/g	ND	0.00421/0.02	PASS



BCL-18: RESIDUAL SOLVENTS ANALYSIS BY HS-GC-MS // NOV 26, 2021

ANALYTE	LIMIT	AMT (µg/g)	LOD/LOQ (µg/g)	PASS/FAIL
1,2-DICHLOROETHANE	1 µg/g	ND	0.17104/0.59666	PASS
ACETONE	5000 µg/g	< LOQ	19.25219/59.66587	PASS
ACETONITRILE	410 µg/g	ND	17.08433/59.66587	PASS
BENZENE	1 µg/g	ND	0.07558/0.59666	PASS
BUTANE	5000 µg/g	ND	18.01512/59.66587	PASS
CHLOROFORM	1 µg/g	ND	0.17502/0.59666	PASS
ETHANOL	5000 µg/g	ND	14.76929/59.66587	PASS
ETHYL ACETATE	5000 µg/g	ND	18.23787/59.66587	PASS
ETHYLENE OXIDE	1 µg/g	ND	0.19093/0.59666	PASS
ETHYL ETHER	5000 µg/g	ND	16.06603/59.66587	PASS
HEPTANE	5000 µg/g	ND	14.05728/59.66587	PASS
HEXANE	290 µg/g	ND	21.6428/99.44312	PASS
ISOPROPYL ALCOHOL	5000 µg/g	ND	14.91647/59.66587	PASS
METHANOL	3000 µg/g	ND	13.37709/59.66587	PASS
METHYLENE CHLORIDE	1 µg/g	ND	0.15115/0.59666	PASS
PENTANE	5000 µg/g	ND	32.89578/99.44312	PASS
PROPANE	5000 µg/g	ND	16.99682/59.66587	PASS
TOLUENE	890 µg/g	< LOQ	9.39141/59.66587	PASS
TRICHLOROETHYLENE	1 µg/g	ND	0.07955/0.59666	PASS
O-XYLENE		ND	4.4471/29.83294	N/A
P- AND M-XYLENE		< LOQ	4.12092/29.83294	N/A
TOTAL XYLENES	2170 µg/g	< LOQ		PASS

BCL-11: MYCOTOXIN TESTING BY LC-MS/MS // NOV 26, 2021

ANALYTE	LIMIT	AMT (µg/kg)	LOD/LOQ (µg/kg)	PASS/FAIL
AFLATOXIN B1		ND	0.23/4	N/A
AFLATOXIN B2		ND	0.181/4	N/A
AFLATOXIN G1		ND	0.155/4	N/A
AFLATOXIN G2		ND	0.934/4	N/A
AFLATOXINS	20 µg/kg	ND		PASS
OCHRATOXIN A	20 µg/kg	ND	0.385/4	PASS

BCL-020: HEAVY METAL TESTING BY ICP-MS // NOV 24, 2021

ANALYTE	LIMIT	AMT (µg/g)	LOD/LOQ (µg/g)	PASS/FAIL
ARSENIC	0.2 µg/g	< LOQ	0.001/0.05	PASS
CADMIUM	0.2 µg/g	< LOQ	0.0002/0.05	PASS
LEAD	0.5 µg/g	< LOQ	0.0003/0.05	PASS
MERCURY	0.1 µg/g	< LOQ	0.0001/0.01	PASS

* FOR QUALITY ASSURANCE PURPOSES. NOT A CALIFORNIA COMPLIANCE CERTIFICATE.

