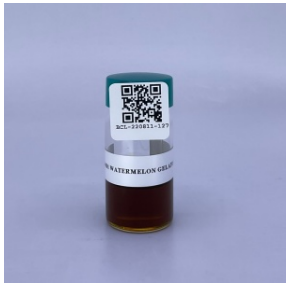


CERTIFICATE OF ANALYSIS

* FOR QUALITY ASSURANCE PURPOSES. NOT A CALIFORNIA COMPLIANCE CERTIFICATE.

PRODUCED: AUG 16, 2022

SAMPLE: 64D1 WATERMELON GELATO 220711 (CONCENTRATE) // CLIENT: ABSTRAX LABS LONG BEACH // BATCH: PASS



MATRIX: CONCENTRATE
 CATEGORY: INHALABLE
 SAMPLE ID: BCL-220811-127
 COLLECTED ON: AUG 11, 2022
 RECEIVED ON: AUG 11, 2022
 SAMPLE SIZE: 8 G

CANNABINOID OVERVIEW

TOTAL THC:	73.45365 %
TOTAL CBD:	0.23452 %
SUM OF CANNABINOIDS:	79.2056 %



POTENCY



PEST
PASS



MICRO
PASS



MYCO
PASS



METALS
PASS

BCL-03: CANNABINOID POTENCY BY HPLC-UV // AUG 13, 2022

ANALYTE	AMT	AMT	LOD/LOQ (mg/g)	PASS/FAIL
CBC	0.82776 %	8.2776 mg/g	0.02165/0.49213	N/A
CBCA	0.14360 %	1.4360 mg/g	0.06201/0.49213	N/A
CBD	0.15994 %	1.5994 mg/g	0.03051/0.49213	N/A
CBDA	0.08504 %	0.8504 mg/g	0.01575/0.49213	N/A
CBDV	ND	ND	0.02362/0.49213	N/A
CBDVA	ND	ND	0.01575/0.49213	N/A
CBG	2.34281 %	23.4281 mg/g	0.02854/0.49213	N/A
CBGA	0.94419 %	9.4419 mg/g	0.01969/0.49213	N/A
CBN	0.10443 %	1.0443 mg/g	0.01575/0.49213	N/A
Δ ⁸ -THC	ND	ND	0.05709/0.49213	N/A
Δ ⁹ -THC	66.96791 %	669.6791 mg/g	0.04134/0.49213	N/A
THCA	7.39537 %	73.9537 mg/g	0.02953/0.49213	N/A
THCV	0.23455 %	2.3455 mg/g	0.03248/0.49213	N/A
THCVA	ND	ND	0.02264/0.49213	N/A
TOT THC**	73.45365 %	734.5365 mg/g		N/A
TOT CBD**	0.23452 %	2.3452 mg/g		N/A

** TOTAL CBD = (CBDA X 0.877) + CBD

** TOTAL THC = (THCA X 0.877) + THC

TERPENOID TESTING BY HS-GC/FID

ANALYTE	AMT	AMT	LOD/LOQ ()	PASS/FAIL
TOTAL TERPENES	ND	ND		N/A
α-PINENE	NT	NT		N/A
CAMPHENE	NT	NT		N/A
β-PINENE	NT	NT		N/A
β-MYRCENE	NT	NT		N/A
Δ ³ -CARENE	NT	NT		N/A
α-TERPINENE	NT	NT		N/A
D-LIMONENE	NT	NT		N/A
P-CYMENE	NT	NT		N/A
α-OCIMENE*	NT	NT		N/A
β-OCIMENE*	NT	NT		N/A
γ-TERPINENE	NT	NT		N/A
TERPINOLENE	NT	NT		N/A
LINALOOL	NT	NT		N/A
ISOPULEGOL	NT	NT		N/A
GERANIOL	NT	NT		N/A
β-CARYOPHYLLENE	NT	NT		N/A
α-HUMULENE	NT	NT		N/A
CIS-NEROLIDOL	NT	NT		N/A
TRANS-NEROLIDOL	NT	NT		N/A
GUAIOL	NT	NT		N/A
α-BISABOLOL	NT	NT		N/A
1,8-CINEOLE*	NT	NT		N/A

* BEYOND SCOPE OF ACCREDITATION

RESULTS CERTIFIED BY: CODY SHEPPARD, PH.D.
 SCIENCE DIRECTOR, BELCOSTA LABS
 AUG 16, 2022



BCL-13: PESTICIDE TESTING BY GC/MS // AUG 14, 2022

ANALYTE	LIMIT	AMT (µg/g)	LOD/LOQ (µg/g)	PASS/FAIL
CAPTAN	0.7 µg/g	ND	0.03124/0.0946	PASS
CHLORDANE	Any amt	ND		PASS
CHLORDANE CIS		ND	0.01105/0.03349	N/A
CHLORDANE TRANS		ND	0.01057/0.03195	N/A
CHLORFENAPYR	Any amt	ND	0.02381/0.07209	PASS

ANALYTE	LIMIT	AMT (µg/g)	LOD/LOQ (µg/g)	PASS/FAIL
CHLORPYRIFOS	Any amt	ND	0.0111/0.03373	PASS
DICHLORVOS	Any amt	ND	0.0117/0.03545	PASS
METHYL PARATHION	Any amt	ND	0.01342/0.04068	PASS
PENTACHLORONI-TROBENZENE	0.1 µg/g	ND	0.01395/0.04234	PASS

BCL-05: RESIDUAL PESTICIDE ANALYSIS BY LC-MS/MS ESI // AUG 15, 2022

ANALYTE	LIMIT	AMT (µg/g)	LOD/LOQ (µg/g)	PASS/FAIL
ABAMECTIN	0.1 µg/g	ND	0.01153/0.04	PASS
ACEPHATE	0.1 µg/g	ND	0.00368/0.02	PASS
ACEQUINOCYL	0.1 µg/g	ND	0.00417/0.02	PASS
ACETAMIPRID	0.1 µg/g	ND	0.00464/0.02	PASS
ALDICARB	Any amt	ND	0.01109/0.04	PASS
AZOXYSTROBIN	0.1 µg/g	ND	0.00639/0.02	PASS
BIFENAZATE	0.1 µg/g	ND	0.00355/0.02	PASS
BIFENTHRIN	3 µg/g	ND	0.00473/0.04	PASS
BOSCALID	0.1 µg/g	< LOQ	0.00494/0.02	PASS
CARBARYL	0.5 µg/g	ND	0.00295/0.02	PASS
CARBOFURAN	Any amt	ND	0.00613/0.02	PASS
CHLORANTRANIL-IPROLE	10 µg/g	ND	0.00697/0.04	PASS
CLOFENTEZINE	0.1 µg/g	ND	0.0054/0.02	PASS
COUMAPHOS	Any amt	ND	0.00215/0.02	PASS
CYFLUTHRIN	2 µg/g	ND	0.05508/0.2	PASS
CYPERMETHRIN	1 µg/g	ND	0.00556/0.04	PASS
DAMINOZIDE	Any amt	ND	0.00227/0.04	PASS
DIAZINON	0.1 µg/g	ND	0.00487/0.02	PASS
DIMETHOATE	Any amt	ND	0.00354/0.02	PASS
DIMETHOMORPH	2 µg/g	ND		PASS
DIMETHOMORPH I		ND	0.00109/0.0078	N/A
DIMETHOMORPH II		ND	0.0015/0.0122	N/A
ETHOPROPHOS	Any amt	ND	0.0041/0.02	PASS
ETOFENPROX	Any amt	ND	0.00274/0.02	PASS
ETOXAZOLE	0.1 µg/g	ND	0.00385/0.02	PASS
FENHEXAMID	0.1 µg/g	ND	0.01055/0.02	PASS
FENOXYCARB	Any amt	ND	0.00175/0.02	PASS
FENPYROXIMATE	0.1 µg/g	ND	0.00481/0.02	PASS
FIPRONIL	Any amt	ND	0.00478/0.02	PASS
FLONICAMID	0.1 µg/g	ND	0.00398/0.02	PASS
FLUDIOXONIL	0.1 µg/g	ND	0.01369/0.04	PASS
HEXYTHIAZOX	0.1 µg/g	ND	0.00297/0.02	PASS
IMAZALIL	Any amt	ND	0.0056/0.02	PASS
IMIDACLOPRID	5 µg/g	ND	0.00645/0.02	PASS
KRESOXIM-METHYL	0.1 µg/g	ND	0.00339/0.02	PASS
MALATHION	0.5 µg/g	< LOQ	0.00472/0.02	PASS

ANALYTE	LIMIT	AMT (µg/g)	LOD/LOQ (µg/g)	PASS/FAIL
METALAXYL	2 µg/g	ND	0.00503/0.02	PASS
METHIOCARB	Any amt	ND	0.00503/0.02	PASS
METHOMYL	1 µg/g	ND	0.00494/0.02	PASS
MEVINPHOS	Any amt	ND		PASS
MEVINPHOS I		ND	0.00163/0.0084	N/A
MEVINPHOS II		ND	0.00542/0.0316	N/A
MYCLOBUTANIL	0.1 µg/g	ND	0.00867/0.04	PASS
NALED	0.1 µg/g	ND	0.00328/0.02	PASS
OXAMYL	0.5 µg/g	ND	0.00455/0.02	PASS
PACLOBUTRAZOL	Any amt	ND	0.00714/0.04	PASS
PERMETHRIN	0.5 µg/g	ND		PASS
PERMETHRIN CIS		ND	0.00237/0.0082	N/A
PERMETHRIN TRANS		ND	0.00245/0.0118	N/A
PHOSMET	0.1 µg/g	ND	0.0043/0.02	PASS
PIPERONYLBUTOXIDE	3 µg/g	ND	0.00247/0.02	PASS
PRALLETHRIN	0.1 µg/g	ND	0.00392/0.02	PASS
PROPICONAZOLE	0.1 µg/g	< LOQ	0.0024/0.02	PASS
PROPOXUR	Any amt	ND	0.00374/0.02	PASS
PYRETHRINS	0.5 µg/g	ND		PASS
PYRETHRINS PYRETHRIN I		ND	0.00726/0.04	N/A
PYRETHRINS PYRETHRIN II		ND	0.00754/0.02284	N/A
PYRIDABEN	0.1 µg/g	ND	0.0034/0.02	PASS
SPINETORAM	0.1 µg/g	ND		PASS
SPINETORAM J		ND	0.00329/0.016	N/A
SPINETORAM L		ND	0.00157/0.016	N/A
SPINOSAD	0.1 µg/g	ND		PASS
SPINOSAD A		ND	0.00205/0.01438	N/A
SPINOSAD D		ND	0.00104/0.00498	N/A
SPIROMESIFEN	0.1 µg/g	ND	0.00944/0.04	PASS
SPIROTETRAMAT	0.1 µg/g	< LOQ	0.00208/0.02	PASS
SPIROXAMINE	Any amt	ND	0.00344/0.02	PASS
TEBUCONAZOLE	0.1 µg/g	< LOQ	0.00816/0.04	PASS
THIACLOPRID	Any amt	ND	0.0039/0.02	PASS
THIAMETHOXAM	5 µg/g	ND	0.00358/0.02	PASS
TRIFLOXYSTROBIN	0.1 µg/g	0.0320	0.00421/0.02	PASS



BCL-06: MICROBIOLOGICAL ANALYSIS BY QPCR // AUG 13, 2022

ANALYTE	LIMIT	AMT (CFU)	PASS/FAIL
ASPERGILLUS FLAVUS	Any amt in 1 gram	ND	PASS
ASPERGILLUS FUMIGATUS	Any amt in 1 gram	ND	PASS
ASPERGILLUS NIGER	Any amt in 1 gram	ND	PASS
ASPERGILLUS TERREUS	Any amt in 1 gram	ND	PASS
ESCHERICHIA COLI	Any amt in 1 gram	ND	PASS
SALMONELLA SPP.	Any amt in 1 gram	ND	PASS

BCL-11: MYCOTOXIN TESTING BY LC-MS/MS // AUG 15, 2022

ANALYTE	LIMIT	AMT (µg/kg)	LOD/LOQ (µg/kg)	PASS/FAIL
AFLATOXIN B1		ND	0.23/4	N/A
AFLATOXIN B2		ND	0.181/4	N/A
AFLATOXIN G1		ND	0.155/4	N/A
AFLATOXIN G2		ND	0.934/4	N/A
AFLATOXINS	20 µg/kg	ND		PASS
OCHRATOXIN A	20 µg/kg	ND	0.385/4	PASS

BCL-020: HEAVY METAL TESTING BY ICP-MS // AUG 13, 2022

ANALYTE	LIMIT	AMT (µg/g)	LOD/LOQ (µg/g)	PASS/FAIL
ARSENIC	0.2 µg/g	< LOQ	0.001/0.05	PASS
CADMIUM	0.2 µg/g	< LOQ	0.0002/0.05	PASS
LEAD	0.5 µg/g	< LOQ	0.0003/0.05	PASS
MERCURY	0.1 µg/g	ND	0.0001/0.01	PASS

* FOR QUALITY ASSURANCE PURPOSES. NOT A CALIFORNIA COMPLIANCE CERTIFICATE.

