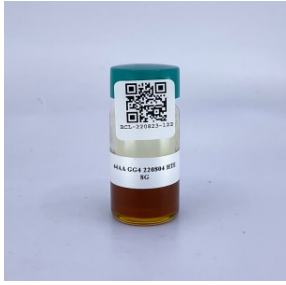


CERTIFICATE OF ANALYSIS

* FOR QUALITY ASSURANCE PURPOSES. NOT A CALIFORNIA COMPLIANCE CERTIFICATE.

PRODUCED: AUG 27, 2022

SAMPLE: 64AA GG4 220804 (OTHER (INHALABLE)) // CLIENT: ABSTRAX LABS LONG BEACH // BATCH: PASS



MATRIX: OTHER (INHALABLE)
 CATEGORY: INHALABLE
 SAMPLE ID: BCL-220823-122
 COLLECTED ON: AUG 23, 2022
 RECEIVED ON: AUG 23, 2022
 SAMPLE SIZE: 8 G

CANNABINOID OVERVIEW

TOTAL THC:	69.83933 %
TOTAL CBD:	0.09269 %
SUM OF CANNABINOIDS:	73.36459 %



POTENCY



PEST
PASS



MYCO
PASS



METALS
PASS



SOLVENT
PASS

BCL-03: CANNABINOID POTENCY BY HPLC-UV // AUG 25, 2022

ANALYTE	AMT	AMT	LOD/LOQ (mg/g)	PASS/FAIL
CBC	1.52489 %	15.2489 mg/g	0.0219/0.49781	N/A
CBCA	ND	ND	0.06272/0.49781	N/A
CBD	0.09269 %	0.9269 mg/g	0.03086/0.49781	N/A
CBDA	ND	ND	0.01593/0.49781	N/A
CBDV	ND	ND	0.02389/0.49781	N/A
CBDVA	ND	ND	0.01593/0.49781	N/A
CBG	1.45420 %	14.5420 mg/g	0.02887/0.49781	N/A
CBGA	ND	ND	0.01991/0.49781	N/A
CBN	0.14337 %	1.4337 mg/g	0.01593/0.49781	N/A
Δ ⁸ -THC	ND	ND	0.05775/0.49781	N/A
Δ ⁹ -THC	69.39088 %	693.9088 mg/g	0.04182/0.49781	N/A
THCA	0.51135 %	5.1135 mg/g	0.02987/0.49781	N/A
THCV	0.24721 %	2.4721 mg/g	0.03286/0.49781	N/A
THCVA	ND	ND	0.0229/0.49781	N/A
TOT THC**	69.83933 %	698.3933 mg/g		N/A
TOT CBD**	0.09269 %	0.9269 mg/g		N/A

** TOTAL CBD = (CBDA X 0.877) + CBD

** TOTAL THC = (THCA X 0.877) + THC

TERPENOID TESTING BY HS-GC/FID

ANALYTE	AMT	AMT	LOD/LOQ ()	PASS/FAIL
TOTAL TERPENES	ND	ND		N/A
α-PINENE	NT	NT		N/A
CAMPHENE	NT	NT		N/A
β-PINENE	NT	NT		N/A
β-MYRCENE	NT	NT		N/A
Δ ³ -CARENE	NT	NT		N/A
α-TERPINENE	NT	NT		N/A
D-LIMONENE	NT	NT		N/A
P-CYMENE	NT	NT		N/A
α-OCIMENE*	NT	NT		N/A
β-OCIMENE*	NT	NT		N/A
γ-TERPINENE	NT	NT		N/A
TERPINOLENE	NT	NT		N/A
LINALOOL	NT	NT		N/A
ISOPULEGOL	NT	NT		N/A
GERANIOL	NT	NT		N/A
β-CARYOPHYLLENE	NT	NT		N/A
α-HUMULENE	NT	NT		N/A
CIS-NEROLIDOL	NT	NT		N/A
TRANS-NEROLIDOL	NT	NT		N/A
GUAIOL	NT	NT		N/A
α-BISABOLOL	NT	NT		N/A
1,8-CINEOLE*	NT	NT		N/A

* BEYOND SCOPE OF ACCREDITATION

RESULTS CERTIFIED BY: CODY SHEPPARD, PH.D.
 SCIENCE DIRECTOR, BELCOSTA LABS
 AUG 27, 2022



BCL-13: PESTICIDE TESTING BY GC/MS // AUG 25, 2022

ANALYTE	LIMIT	AMT (µg/g)	LOD/LOQ (µg/g)	PASS/FAIL
CAPTAN	0.7 µg/g	ND	0.03145/0.09524	PASS
CHLORDANE	Any amt	ND		PASS
CHLORDANE CIS		ND	0.01112/0.03372	N/A
CHLORDANE TRANS		ND	0.01064/0.03216	N/A
CHLORFENAPYR	Any amt	ND	0.02397/0.07258	PASS

ANALYTE	LIMIT	AMT (µg/g)	LOD/LOQ (µg/g)	PASS/FAIL
CHLORPYRIFOS	Any amt	ND	0.01118/0.03396	PASS
DICHLORVOS	Any amt	ND	0.01178/0.03569	PASS
METHYL PARATHION	Any amt	ND	0.01351/0.04095	PASS
PENTACHLORONI-TROBENZENE	0.1 µg/g	ND	0.01405/0.04263	PASS

BCL-05: RESIDUAL PESTICIDE ANALYSIS BY LC-MS/MS ESI // AUG 25, 2022

ANALYTE	LIMIT	AMT (µg/g)	LOD/LOQ (µg/g)	PASS/FAIL
ABAMECTIN	0.1 µg/g	ND	0.01153/0.04	PASS
ACEPHATE	0.1 µg/g	ND	0.00368/0.02	PASS
ACEQUINOCYL	0.1 µg/g	ND	0.00417/0.02	PASS
ACETAMIPRID	0.1 µg/g	ND	0.00464/0.02	PASS
ALDICARB	Any amt	ND	0.01109/0.04	PASS
AZOXYSTROBIN	0.1 µg/g	ND	0.00639/0.02	PASS
BIFENAZATE	0.1 µg/g	ND	0.00355/0.02	PASS
BIFENTHRIN	3 µg/g	ND	0.00473/0.04	PASS
BOSCALID	0.1 µg/g	ND	0.00494/0.02	PASS
CARBARYL	0.5 µg/g	ND	0.00295/0.02	PASS
CARBOFURAN	Any amt	ND	0.00613/0.02	PASS
CHLORANTRANIL-IPROLE	10 µg/g	ND	0.00697/0.04	PASS
CLOFENTEZINE	0.1 µg/g	ND	0.0054/0.02	PASS
COUMAPHOS	Any amt	ND	0.00215/0.02	PASS
CYFLUTHRIN	2 µg/g	ND	0.05508/0.2	PASS
CYPERMETHRIN	1 µg/g	ND	0.00556/0.04	PASS
DAMINOZIDE	Any amt	ND	0.00227/0.04	PASS
DIAZINON	0.1 µg/g	ND	0.00487/0.02	PASS
DIMETHOATE	Any amt	ND	0.00354/0.02	PASS
DIMETHOMORPH	2 µg/g	ND		PASS
DIMETHOMORPH I		ND	0.00109/0.0078	N/A
DIMETHOMORPH II		ND	0.0015/0.0122	N/A
ETHOPROPHOS	Any amt	ND	0.0041/0.02	PASS
ETOFENPROX	Any amt	ND	0.00274/0.02	PASS
ETOXAZOLE	0.1 µg/g	ND	0.00385/0.02	PASS
FENHEXAMID	0.1 µg/g	ND	0.01055/0.02	PASS
FENOXYCARB	Any amt	ND	0.00175/0.02	PASS
FENPYROXIMATE	0.1 µg/g	ND	0.00481/0.02	PASS
FIPRONIL	Any amt	ND	0.00478/0.02	PASS
FLONICAMID	0.1 µg/g	ND	0.00398/0.02	PASS
FLUDIOXONIL	0.1 µg/g	ND	0.01369/0.04	PASS
HEXYTHIAZOX	0.1 µg/g	ND	0.00297/0.02	PASS
IMAZALIL	Any amt	ND	0.0056/0.02	PASS
IMIDACLOPRID	5 µg/g	ND	0.00645/0.02	PASS
KRESOXIM-METHYL	0.1 µg/g	ND	0.00339/0.02	PASS
MALATHION	0.5 µg/g	ND	0.00472/0.02	PASS

ANALYTE	LIMIT	AMT (µg/g)	LOD/LOQ (µg/g)	PASS/FAIL
METALAXYL	2 µg/g	ND	0.00503/0.02	PASS
METHIOCARB	Any amt	ND	0.00503/0.02	PASS
METHOMYL	1 µg/g	ND	0.00494/0.02	PASS
MEVINPHOS	Any amt	ND		PASS
MEVINPHOS I		ND	0.00163/0.0084	N/A
MEVINPHOS II		ND	0.00542/0.0316	N/A
MYCLOBUTANIL	0.1 µg/g	ND	0.00867/0.04	PASS
NALED	0.1 µg/g	ND	0.00328/0.02	PASS
OXAMYL	0.5 µg/g	ND	0.00455/0.02	PASS
PACLOBUTRAZOL	Any amt	ND	0.00714/0.04	PASS
PERMETHRIN	0.5 µg/g	ND		PASS
PERMETHRIN CIS		ND	0.00237/0.0082	N/A
PERMETHRIN TRANS		ND	0.00245/0.0118	N/A
PHOSMET	0.1 µg/g	ND	0.0043/0.02	PASS
PIPERONYLBUTOXIDE	3 µg/g	ND	0.00247/0.02	PASS
PRALLETHRIN	0.1 µg/g	ND	0.00392/0.02	PASS
PROPICONAZOLE	0.1 µg/g	< LOQ	0.0024/0.02	PASS
PROPOXUR	Any amt	ND	0.00374/0.02	PASS
PYRETHRINS	0.5 µg/g	ND		PASS
PYRETHRINS PYRETHRIN I		ND	0.00726/0.04	N/A
PYRETHRINS PYRETHRIN II		ND	0.00754/0.02284	N/A
PYRIDABEN	0.1 µg/g	ND	0.0034/0.02	PASS
SPINETORAM	0.1 µg/g	ND		PASS
SPINETORAM J		ND	0.00329/0.016	N/A
SPINETORAM L		ND	0.00157/0.016	N/A
SPINOSAD	0.1 µg/g	ND		PASS
SPINOSAD A		ND	0.00205/0.01438	N/A
SPINOSAD D		ND	0.00104/0.00498	N/A
SPIROMESIFEN	0.1 µg/g	ND	0.00944/0.04	PASS
SPIROTETRAMAT	0.1 µg/g	ND	0.00208/0.02	PASS
SPIROXAMINE	Any amt	ND	0.00344/0.02	PASS
TEBUCONAZOLE	0.1 µg/g	ND	0.00816/0.04	PASS
THIACLOPRID	Any amt	ND	0.0039/0.02	PASS
THIAMETHOXAM	5 µg/g	ND	0.00358/0.02	PASS
TRIFLOXYSTROBIN	0.1 µg/g	ND	0.00421/0.02	PASS



BCL-18: RESIDUAL SOLVENTS ANALYSIS BY HS-GC-MS // AUG 25, 2022

ANALYTE	LIMIT	AMT (µg/g)	LOD/LOQ (µg/g)	PASS/FAIL
1,2-DICHLOROETHANE	1 µg/g	ND	0.17138/0.59785	PASS
ACETONE	5000 µg/g	ND	19.29055/59.78477	PASS
ACETONITRILE	410 µg/g	ND	17.11837/59.78477	PASS
BENZENE	1 µg/g	ND	0.07573/0.59785	PASS
BUTANE	5000 µg/g	ND	18.05102/59.78477	PASS
CHLOROFORM	1 µg/g	ND	0.17537/0.59785	PASS
ETHANOL	5000 µg/g	ND	14.79872/59.78477	PASS
ETHYL ACETATE	5000 µg/g	ND	18.27421/59.78477	PASS
ETHYLENE OXIDE	1 µg/g	ND	0.19131/0.59785	PASS
ETHYL ETHER	5000 µg/g	ND	16.09805/59.78477	PASS
HEPTANE	5000 µg/g	ND	14.08529/59.78477	PASS
HEXANE	290 µg/g	ND	21.68593/99.64129	PASS
ISOPROPYL ALCOHOL	5000 µg/g	ND	14.94619/59.78477	PASS
METHANOL	3000 µg/g	ND	13.40375/59.78477	PASS
METHYLENE CHLORIDE	1 µg/g	ND	0.15145/0.59785	PASS
PENTANE	5000 µg/g	ND	32.96134/99.64129	PASS
PROPANE	5000 µg/g	ND	17.03069/59.78477	PASS
TOLUENE	890 µg/g	ND	9.41012/59.78477	PASS
TRICHLOROETHYLENE	1 µg/g	ND	0.07971/0.59785	PASS
O-XYLENE		ND	4.45596/29.89239	N/A
P- AND M-XYLENE		ND	4.12914/29.89239	N/A
TOTAL XYLENES	2170 µg/g	ND		PASS

BCL-11: MYCOTOXIN TESTING BY LC-MS/MS // AUG 25, 2022

ANALYTE	LIMIT	AMT (µg/kg)	LOD/LOQ (µg/kg)	PASS/FAIL
AFLATOXIN B1		ND	0.23/4	N/A
AFLATOXIN B2		ND	0.181/4	N/A
AFLATOXIN G1		ND	0.155/4	N/A
AFLATOXIN G2		ND	0.934/4	N/A
AFLATOXINS	20 µg/kg	ND		PASS
OCHRATOXIN A	20 µg/kg	ND	0.385/4	PASS

BCL-020: HEAVY METAL TESTING BY ICP-MS // AUG 24, 2022

ANALYTE	LIMIT	AMT (µg/g)	LOD/LOQ (µg/g)	PASS/FAIL
ARSENIC	0.2 µg/g	< LOQ	0.001/0.05	PASS
CADMIUM	0.2 µg/g	< LOQ	0.0002/0.05	PASS
LEAD	0.5 µg/g	< LOQ	0.0003/0.05	PASS
MERCURY	0.1 µg/g	< LOQ	0.0001/0.01	PASS

* FOR QUALITY ASSURANCE PURPOSES. NOT A CALIFORNIA COMPLIANCE CERTIFICATE.

