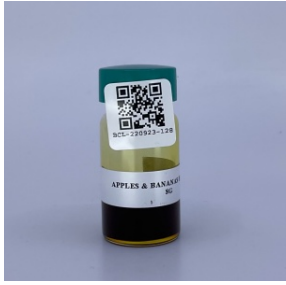


CERTIFICATE OF ANALYSIS

* FOR QUALITY ASSURANCE PURPOSES. NOT A CALIFORNIA COMPLIANCE CERTIFICATE.

PRODUCED: SEP 26, 2022

SAMPLE: APPLES & BANANAS 220827 (CONCENTRATE) // CLIENT: ABSTRAX LABS LONG BEACH // BATCH: PASS



MATRIX: CONCENTRATE
 CATEGORY: INHALABLE
 SAMPLE ID: BCL-220923-128
 COLLECTED ON: SEP 23, 2022
 RECEIVED ON: SEP 23, 2022
 SAMPLE SIZE: 8 G

CANNABINOID OVERVIEW

TOTAL THC:	75.22972 %
TOTAL CBD:	0.13878 %
SUM OF CANNABINOIDS:	79.28449 %



POTENCY



PEST
PASS



MYCO
PASS



METALS
PASS



SOLVENT
PASS

BCL-03: CANNABINOID POTENCY BY HPLC-UV // SEP 25, 2022

ANALYTE	AMT	AMT	LOD/LOQ (mg/g)	PASS/FAIL
CBC	1.07276 %	10.7276 mg/g	0.02181/0.49564	N/A
CBCA	ND	ND	0.06245/0.49564	N/A
CBD	0.13878 %	1.3878 mg/g	0.03073/0.49564	N/A
CBDA	ND	ND	0.01586/0.49564	N/A
CBDV	ND	ND	0.02379/0.49564	N/A
CBDVA	ND	ND	0.01586/0.49564	N/A
CBG	2.31404 %	23.1404 mg/g	0.02875/0.49564	N/A
CBGA	0.07058 %	0.7058 mg/g	0.01983/0.49564	N/A
CBN	0.13263 %	1.3263 mg/g	0.01586/0.49564	N/A
Δ ⁸ -THC	ND	ND	0.05749/0.49564	N/A
Δ ⁹ -THC	75.08941 %	750.8941 mg/g	0.04163/0.49564	N/A
THCA	0.15999 %	1.5999 mg/g	0.02974/0.49564	N/A
THCV	0.30630 %	3.0630 mg/g	0.03271/0.49564	N/A
THCVA	ND	ND	0.0228/0.49564	N/A
TOT THC**	75.22972 %	752.2972 mg/g		N/A
TOT CBD**	0.13878 %	1.3878 mg/g		N/A

** TOTAL CBD = (CBDA X 0.877) + CBD

** TOTAL THC = (THCA X 0.877) + THC

TERPENOID TESTING BY HS-GC/FID

ANALYTE	AMT	AMT	LOD/LOQ ()	PASS/FAIL
TOTAL TERPENES	ND	ND		N/A
α-PINENE	NT	NT		N/A
CAMPHENE	NT	NT		N/A
β-PINENE	NT	NT		N/A
β-MYRCENE	NT	NT		N/A
Δ ³ -CARENE	NT	NT		N/A
α-TERPINENE	NT	NT		N/A
D-LIMONENE	NT	NT		N/A
P-CYMENE	NT	NT		N/A
α-OCIMENE*	NT	NT		N/A
β-OCIMENE*	NT	NT		N/A
γ-TERPINENE	NT	NT		N/A
TERPINOLENE	NT	NT		N/A
LINALOOL	NT	NT		N/A
ISOPULEGOL	NT	NT		N/A
GERANIOL	NT	NT		N/A
β-CARYOPHYLLENE	NT	NT		N/A
α-HUMULENE	NT	NT		N/A
CIS-NEROLIDOL	NT	NT		N/A
TRANS-NEROLIDOL	NT	NT		N/A
GUAJOL	NT	NT		N/A
α-BISABOLOL	NT	NT		N/A
1,8-CINEOLE*	NT	NT		N/A

* BEYOND SCOPE OF ACCREDITATION

RESULTS CERTIFIED BY: CODY SHEPPARD, PH.D.
 SCIENCE DIRECTOR, BELCOSTA LABS
 SEP 26, 2022



BCL-05: RESIDUAL PESTICIDE ANALYSIS BY LC-MS/MS ESI // SEP 25, 2022

ANALYTE	LIMIT	AMT (µg/g)	LOD/LOQ (µg/g)	PASS/FAIL	ANALYTE	LIMIT	AMT (µg/g)	LOD/LOQ (µg/g)	PASS/FAIL
ABAMECTIN	0.1 µg/g	ND	0.0244/0.07393	PASS	METALAXYL	2 µg/g	ND	0.0058/0.01757	PASS
ACEPHATE	0.1 µg/g	ND	0.01224/0.0371	PASS	METHIOCARB	Any amt	ND	0.00885/0.02681	PASS
ACEQUINOCYL	0.1 µg/g	ND	0.01993/0.06038	PASS	METHOMYL	1 µg/g	ND	0.00837/0.02537	PASS
ACETAMIPRID	0.1 µg/g	ND	0.0043/0.01302	PASS	MEVINPHOS	Any amt	ND		PASS
ALDICARB	Any amt	ND	0.01219/0.03693	PASS	MEVINPHOS I		ND	0.001/0.00303	N/A
AZOXYSTROBIN	0.1 µg/g	ND	0.00771/0.02337	PASS	MEVINPHOS II		ND	0.00529/0.01603	N/A
BIFENAZATE	0.1 µg/g	ND	0.00373/0.01131	PASS	MYCLOBUTANIL	0.1 µg/g	ND	0.01719/0.0521	PASS
BIFENTHRIN	3 µg/g	ND	0.01267/0.03839	PASS	NALED	0.1 µg/g	ND	0.01059/0.0321	PASS
BOSCALID	0.1 µg/g	< LOQ	0.01406/0.04261	PASS	OXAMYL	0.5 µg/g	ND	0.00617/0.01869	PASS
CARBARYL	0.5 µg/g	ND	0.00615/0.01865	PASS	PACLOBUTRAZOL	Any amt	ND	0.01076/0.03262	PASS
CARBOFURAN	Any amt	ND	0.00411/0.01246	PASS	PERMETHRIN	0.5 µg/g	ND		PASS
CHLORANTRANIL-IPROLE	10 µg/g	ND	0.01069/0.0324	PASS	PERMETHRIN CIS		ND	0.00993/0.03008	N/A
CLOFENTEZINE	0.1 µg/g	ND	0.01404/0.04256	PASS	PERMETHRIN TRANS		ND	0.01265/0.03833	N/A
COUMAPHOS	Any amt	ND	0.01952/0.05914	PASS	PHOSMET	0.1 µg/g	ND	0.00601/0.01822	PASS
CYFLUTHRIN	2 µg/g	ND	0.1511/0.45788	PASS	PIPERONYLBUTOXIDE	3 µg/g	ND	0.00261/0.00791	PASS
CYPERMETHRIN	1 µg/g	ND	0.02284/0.06921	PASS	PRALLETHRIN	0.1 µg/g	ND	0.00989/0.02996	PASS
DAMINOZIDE	Any amt	ND	0.0237/0.07182	PASS	PROPICONAZOLE	0.1 µg/g	< LOQ	0.00577/0.01747	PASS
DIAZINON	0.1 µg/g	ND	0.0027/0.00818	PASS	PROPOXUR	Any amt	ND	0.00593/0.01798	PASS
DIMETHOATE	Any amt	ND	0.00353/0.01069	PASS	PYRETHRINS	0.5 µg/g	0.2622		PASS
DIMETHOMORPH	2 µg/g	ND		PASS	PYRETHRINS PYRETHRIN I		0.1731	0.00435/0.01318	N/A
DIMETHOMORPH I		ND	0.00554/0.01679	N/A	PYRETHRINS PYRETHRIN II		0.0891	0.00386/0.01169	N/A
DIMETHOMORPH II		ND	0.00327/0.00992	N/A	PYRIDABEN	0.1 µg/g	ND	0.00388/0.01176	PASS
ETHOPROPHOS	Any amt	ND	0.00632/0.01914	PASS	SPINETORAM	0.1 µg/g	ND		PASS
ETOFENPROX	Any amt	ND	0.00604/0.01831	PASS	SPINETORAM J		ND	0.00694/0.02103	N/A
ETOXAZOLE	0.1 µg/g	ND	0.00363/0.01099	PASS	SPINETORAM L		ND	0.00902/0.02734	N/A
FENHEXAMID	0.1 µg/g	ND	0.01344/0.04073	PASS	SPINOSAD	0.1 µg/g	ND		PASS
FENOXYCARB	Any amt	ND	0.0047/0.01423	PASS	SPINOSAD A		ND	0.00799/0.02422	N/A
FENPYROXIMATE	0.1 µg/g	ND	0.00277/0.0084	PASS	SPINOSAD D		ND	0.00275/0.00834	N/A
FIPRONIL	Any amt	ND	0.00678/0.02054	PASS	SPIROMESIFEN	0.1 µg/g	ND	0.00693/0.021	PASS
FLONICAMID	0.1 µg/g	ND	0.0046/0.01393	PASS	SPIROTETRAMAT	0.1 µg/g	ND	0.00537/0.01627	PASS
FLUDIOXONIL	0.1 µg/g	ND	0.03245/0.09834	PASS	SPIROXAMINE	Any amt	ND	0.00549/0.01663	PASS
HEXYTHIAZOX	0.1 µg/g	ND	0.00409/0.01238	PASS	TEBUCONAZOLE	0.1 µg/g	< LOQ	0.00874/0.02647	PASS
IMAZALIL	Any amt	ND	0.012/0.03637	PASS	THIACLOPRID	Any amt	ND	0.00458/0.01389	PASS
IMIDACLOPRID	5 µg/g	ND	0.00796/0.02411	PASS	THIAMETHOXAM	5 µg/g	ND	0.00395/0.01196	PASS
KRESOXIM-METHYL	0.1 µg/g	ND	0.00989/0.02997	PASS	TRIFLOXYSTROBIN	0.1 µg/g	0.0165	0.00354/0.01072	PASS
MALATHION	0.5 µg/g	ND	0.00701/0.02124	PASS					

BCL-13: PESTICIDE TESTING BY GC/MS // SEP 26, 2022

ANALYTE	LIMIT	AMT (µg/g)	LOD/LOQ (µg/g)	PASS/FAIL	ANALYTE	LIMIT	AMT (µg/g)	LOD/LOQ (µg/g)	PASS/FAIL
CAPTAN	0.7 µg/g	ND	0.03077/0.09319	PASS	CHLORPYRIFOS	Any amt	ND	0.01094/0.03323	PASS
CHLORDANE	Any amt	ND		PASS	DICHLORVOS	Any amt	ND	0.01152/0.03493	PASS
CHLORDANE CIS		ND	0.01088/0.033	N/A	METHYL PARATHION	Any amt	ND	0.01322/0.04007	PASS
CHLORDANE TRANS		ND	0.01041/0.03147	N/A	PENTACHLORONITROBENZENE	0.1 µg/g	ND	0.01375/0.04171	PASS
CHLORFENAPYR	Any amt	ND	0.02346/0.07102	PASS					



BCL-18: RESIDUAL SOLVENTS ANALYSIS BY HS-GC-MS // SEP 25, 2022

ANALYTE	LIMIT	AMT (µg/g)	LOD/LOQ (µg/g)	PASS/FAIL
1,2-DICHLOROETHANE	1 µg/g	ND	0.17091/0.59618	PASS
ACETONE	5000 µg/g	< LOQ	19.23688/59.61844	PASS
ACETONITRILE	410 µg/g	ND	17.07075/59.61844	PASS
BENZENE	1 µg/g	< LOQ	0.07552/0.59618	PASS
BUTANE	5000 µg/g	ND	18.00079/59.61844	PASS
CHLOROFORM	1 µg/g	ND	0.17488/0.59618	PASS
ETHANOL	5000 µg/g	ND	14.75755/59.61844	PASS
ETHYL ACETATE	5000 µg/g	ND	18.22337/59.61844	PASS
ETHYLENE OXIDE	1 µg/g	ND	0.19078/0.59618	PASS
ETHYL ETHER	5000 µg/g	ND	16.05326/59.61844	PASS
HEPTANE	5000 µg/g	ND	14.0461/59.61844	PASS
HEXANE	290 µg/g	ND	21.6256/99.36407	PASS
ISOPROPYL ALCOHOL	5000 µg/g	ND	14.90461/59.61844	PASS
METHANOL	3000 µg/g	ND	13.36645/59.61844	PASS
METHYLENE CHLORIDE	1 µg/g	ND	0.15103/0.59618	PASS
PENTANE	5000 µg/g	ND	32.86963/99.36407	PASS
PROPANE	5000 µg/g	ND	16.98331/59.61844	PASS
TOLUENE	890 µg/g	ND	9.38394/59.61844	PASS
TRICHLOROETHYLENE	1 µg/g	ND	0.07949/0.59618	PASS
O-XYLENE		ND	4.44356/29.80922	N/A
P- AND M-XYLENE		ND	4.11765/29.80922	N/A
TOTAL XYLENES	2170 µg/g	ND		PASS

BCL-11: MYCOTOXIN TESTING BY LC-MS/MS // SEP 25, 2022

ANALYTE	LIMIT	AMT (µg/kg)	LOD/LOQ (µg/kg)	PASS/FAIL
AFLATOXIN B1		ND	1.97/5.96	N/A
AFLATOXIN B2		ND	1.32/3.99	N/A
AFLATOXIN G1		ND	1.6/4.86	N/A
AFLATOXIN G2		ND	1.46/4.44	N/A
AFLATOXINS	20 µg/kg	ND		PASS
OCHRATOXIN A	20 µg/kg	ND	1.35/4.08	PASS

BCL-020: HEAVY METAL TESTING BY ICP-MS // SEP 24, 2022

ANALYTE	LIMIT	AMT (µg/g)	LOD/LOQ (µg/g)	PASS/FAIL
ARSENIC	0.2 µg/g	ND	0.001/0.05	PASS
CADMIUM	0.2 µg/g	< LOQ	0.0002/0.05	PASS
LEAD	0.5 µg/g	< LOQ	0.0003/0.05	PASS
MERCURY	0.1 µg/g	< LOQ	0.0001/0.01	PASS

* FOR QUALITY ASSURANCE PURPOSES. NOT A CALIFORNIA COMPLIANCE CERTIFICATE.

